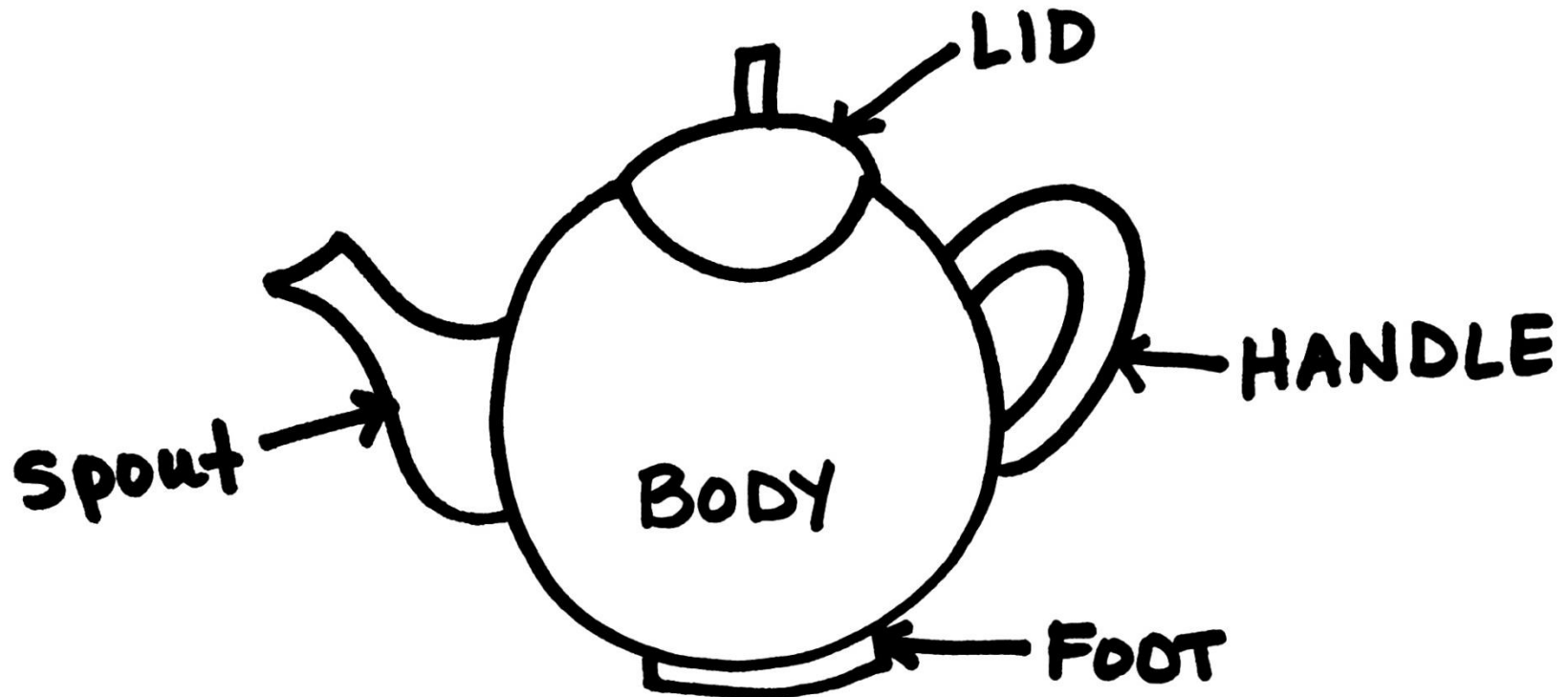


# Handbuilt Ceramic Teapot

- You will be required to create a 3 piece set: a teapot, cup and one additional piece of your choice (platter, saucer, sugar dish, etc...)
- Parts of the Teapot:



# Subject matter:

- Every teapot must be functional for this project but the design concept is up to you:
  - Traditional or Abstract
  - Symbolic
  - Based on something (story, artist, concept...)
  - The possibilities are endless...



Manastyan High School





High School  
Night  
Pencell





Manasquan High School  
Fine Arts Night





Blue Arts & Crafts  
Artist: [REDACTED]  
Grade: 12  
Medium: clay



[Redacted]

[Redacted]

[Redacted]

[Redacted]











MARILYN













Manayunk Indian Pottery  
[Redacted]









Metropolitan High School  
Art  
Ceramics  
Metropolitan High School









תחתון  
תחתון  
תחתון

כא























































































毒品 性別 煙滾



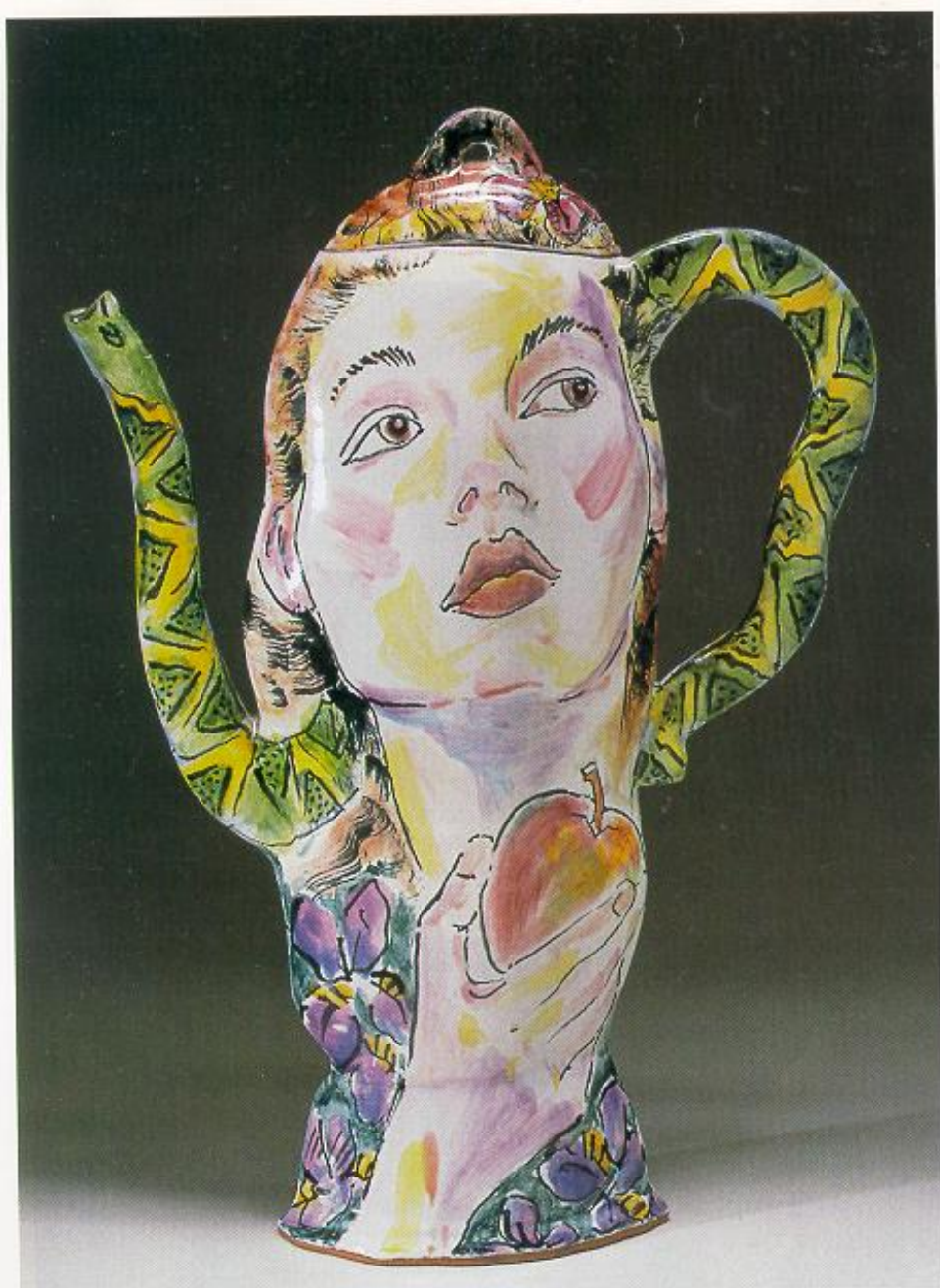




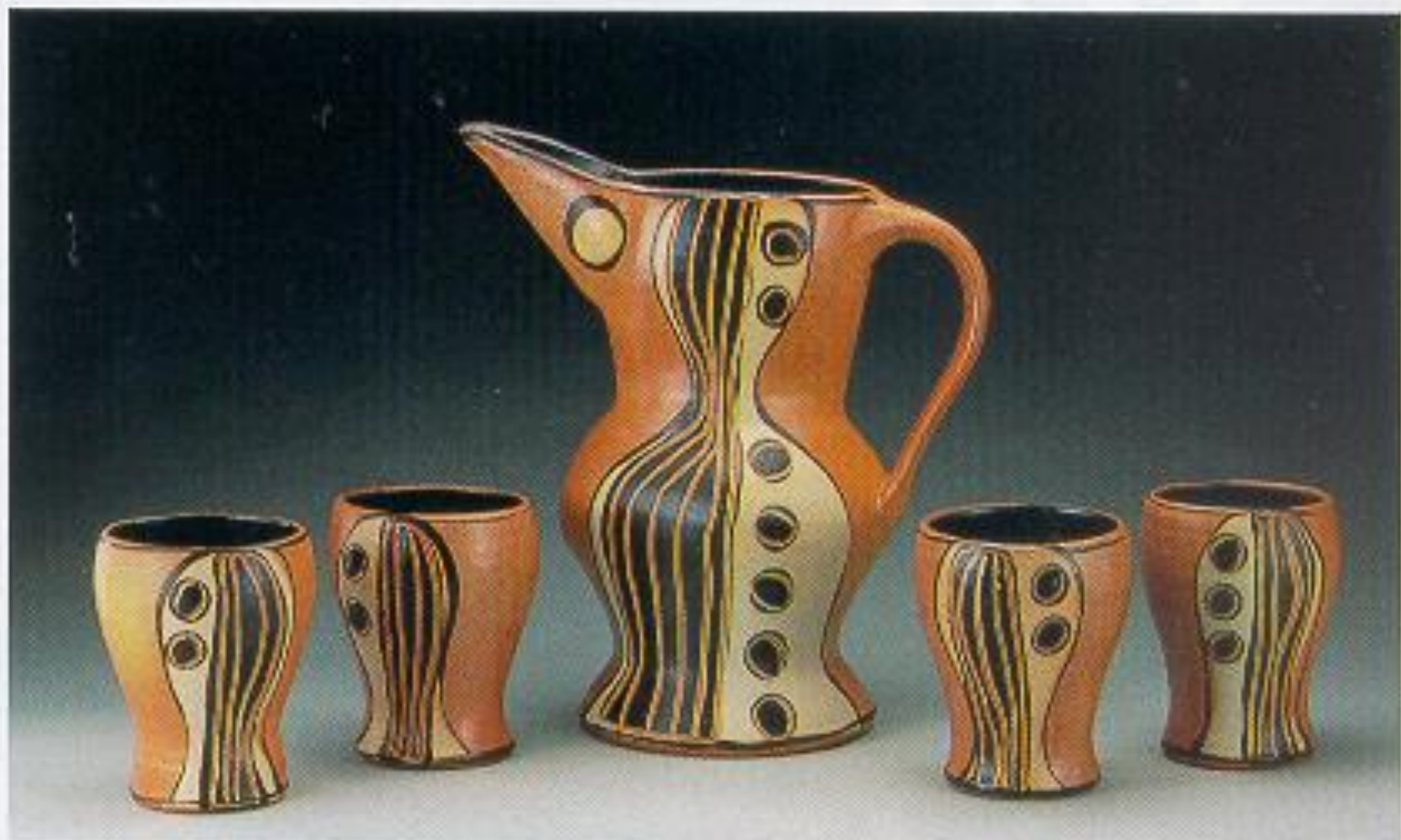
STORALL







"Tempting Eve Teapot," 23 inches in height, terra cotta with majolica glaze, \$800, by Carol and Richard Selfridge, Alberta, Canada.



Suze Lindsay's "Pitchers and Tumblers," to 15 inches in height, salt-fired stoneware, \$250 for the pitcher; at Blue Spiral 1, Asheville, North Carolina.





"Teapot with Orange Spout," 6 inches in height, porcelain with brushed and resisted oxides and glazes, fired to Cone 10 reduction in a gas downdraft kiln, by Lynn Smiser Bowers, Kansas City, Missouri.



*Muscadine Teaset. 7½" x 8" x 5". Porcelain, wheel-thrown and altered. Fired to cone 6 in oxidation.  
Mary-Helen Horne, 1130 Rocky Rd.,  
Lawrenceville, GA 30044.*





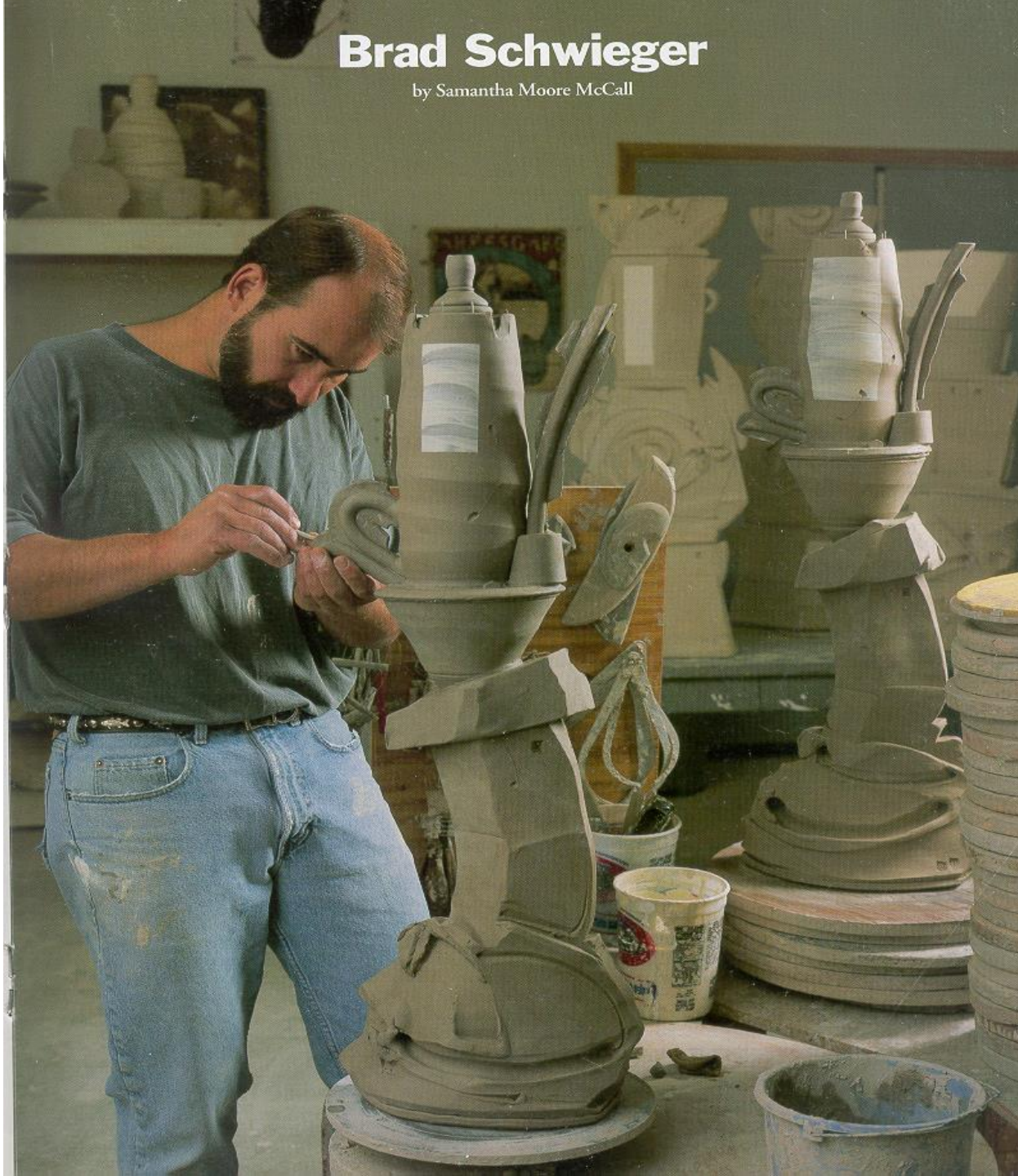


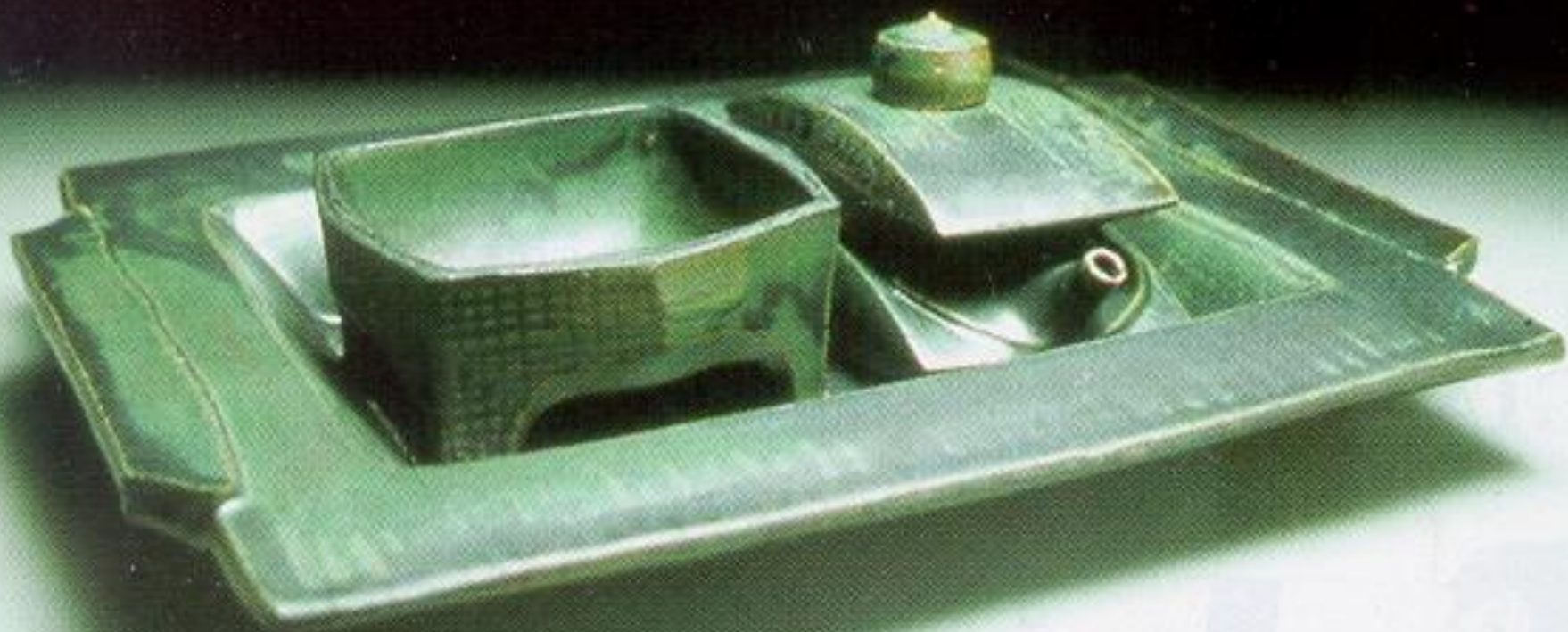
"Teapot #2" by Ester I. Ikeda, Manhattan, Kansas;  
\$100 purchase award winner.



# Brad Schwieger

by Samantha Moore McCall









*Yellow Variation, Teapot* by John Glumpler, Archer, FL. 15" x 15" x 3".



*Mona Lisa/Van Gogh* by Noi Volkov, 1999.  
(Mona Lisa on reverse side.)  
Earthenware. 43.8 x 33.7 x 14.2 cm.





"Three-Legged Teapots with Rubber Handles," 21 inches in height, \$235 each.



*Aesthetic Teapot (Oscar Wilde)* by Royal Worcester Porcelain Company, c. 1881-82.  
16 x 17.8 x 8.9 cm.

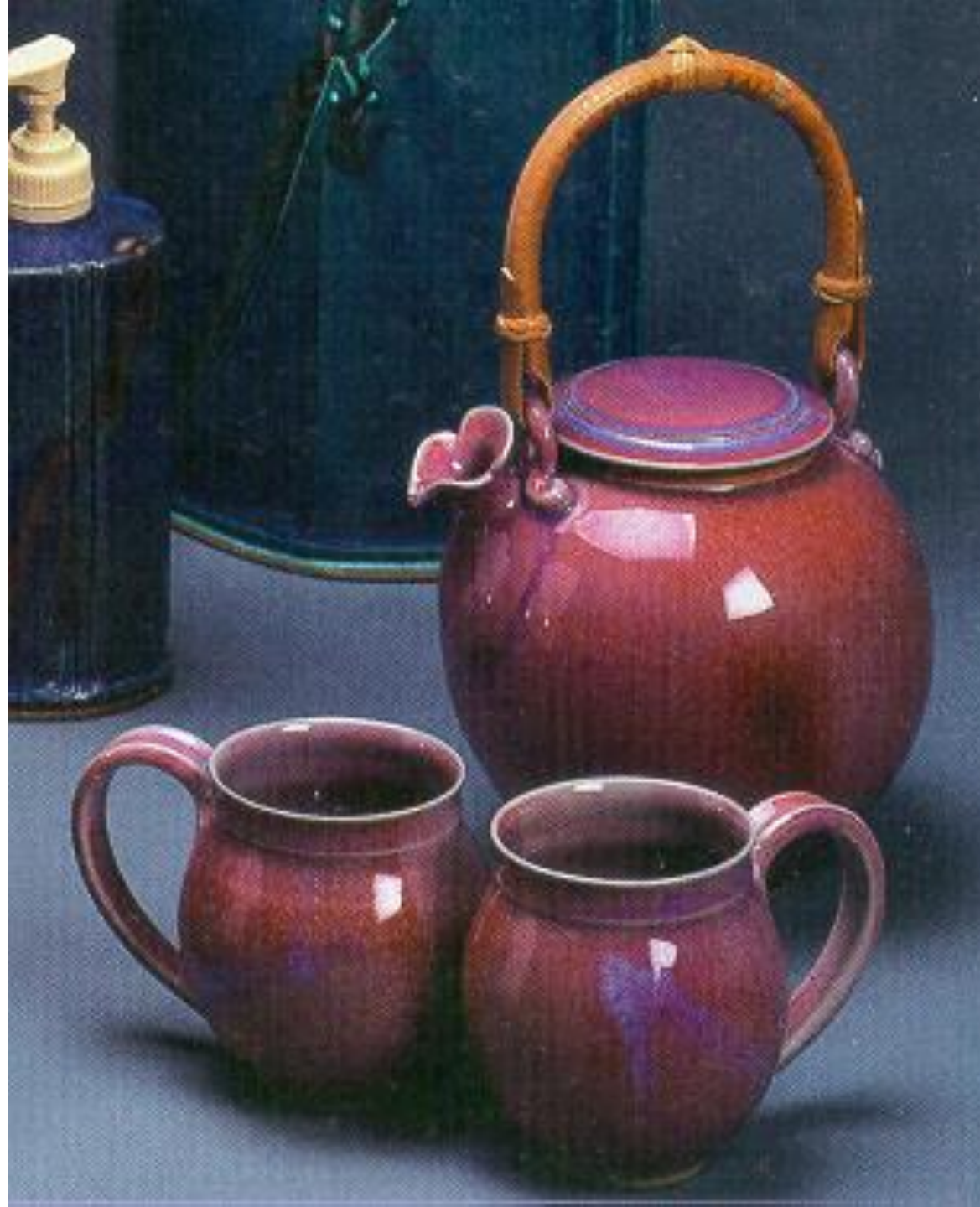






*Ceremonial Tea Set.* Handbuilt with slabs and coils using mixed recycled clays. Celadon glaze over iron stain fired to cone 10 in reduction; later accented with gold luster.  
Dean E. McWilliams, 26340 Scott Rd., Menifee, CA 92584.  
E-mail: [des.macsturm@verizon.net](mailto:des.macsturm@verizon.net)

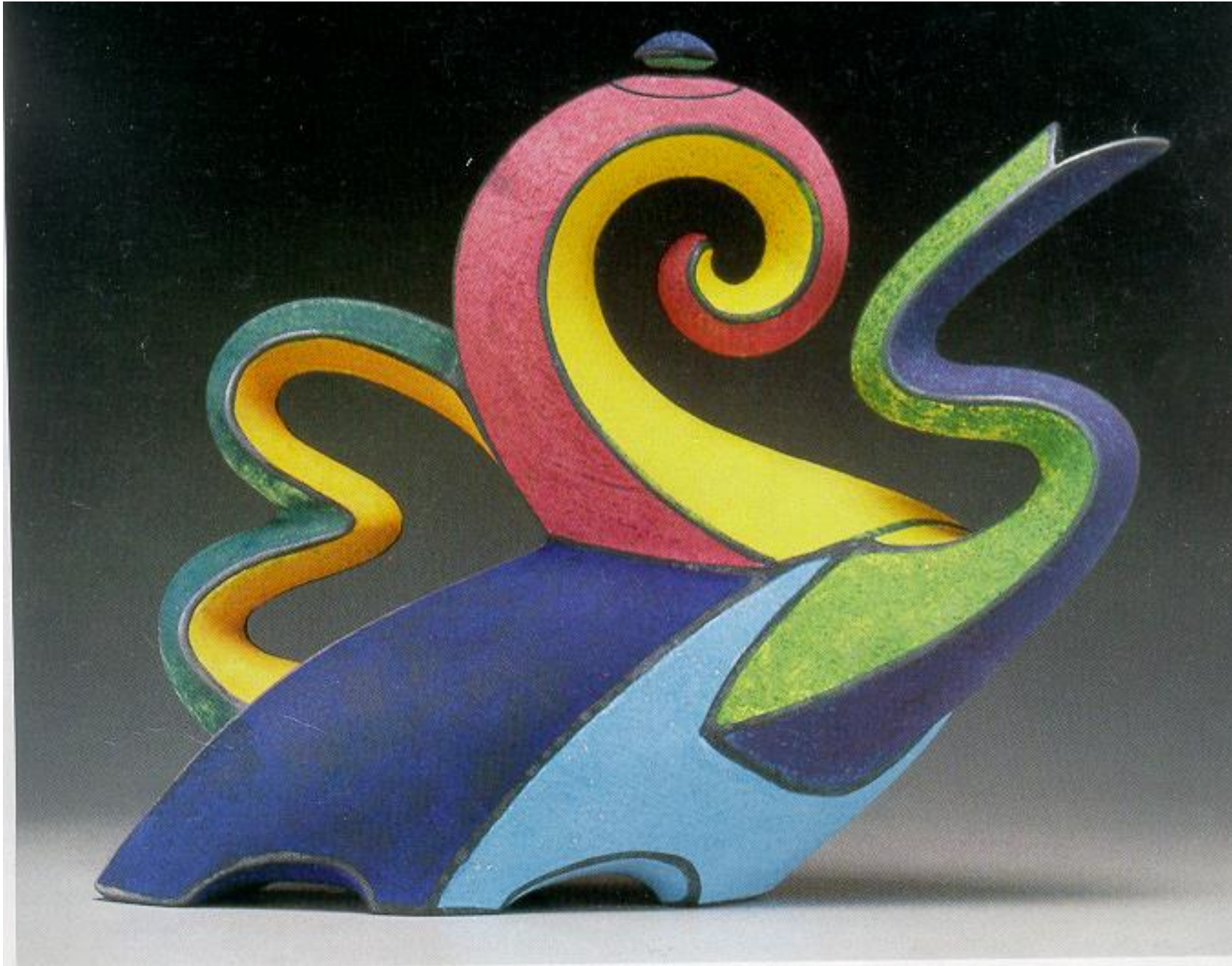






"Wavy Ewer and Tray," 18½ inches in length, wheel-thrown and altered stoneware, with terra sigillata and stains, \$250, by Steve Hansen, Berrien Springs, Michigan.





"Sauras Tea," 18 inches in height, extruded and handbuilt, brushed with stained alkaline glazes, \$3200, by Michael Sherrill, Hendersonville, North Carolina.



"Jujunum," 20 inches in height, porcelain decanter, cups and tray, \$575, by Bonnie Seeman, Plantation, Florida.





Teapot form, 27 inches in height, by Kathy Triplett, Weaverville, North Carolina.



"Pumpkin Teapot," 11 inches in height, slip-cast and handbuilt whiteware, with Cone 06-04 glazes, \$150.



Sam Chung

by Glen R. Brown





"Burnt Wood Teapot," 7 inches in height, slip cast and handbuilt, brushed with color variations of the same low-fire glaze, \$225.







Ole Rokvam's "Tubing Teapot," 12½ inches in height, sandblasted stoneware with metal tubing, \$250; at the Oconomowoc (Wisconsin) Gallery and at Chiaroscuro Gallery in Chicago, Illinois.



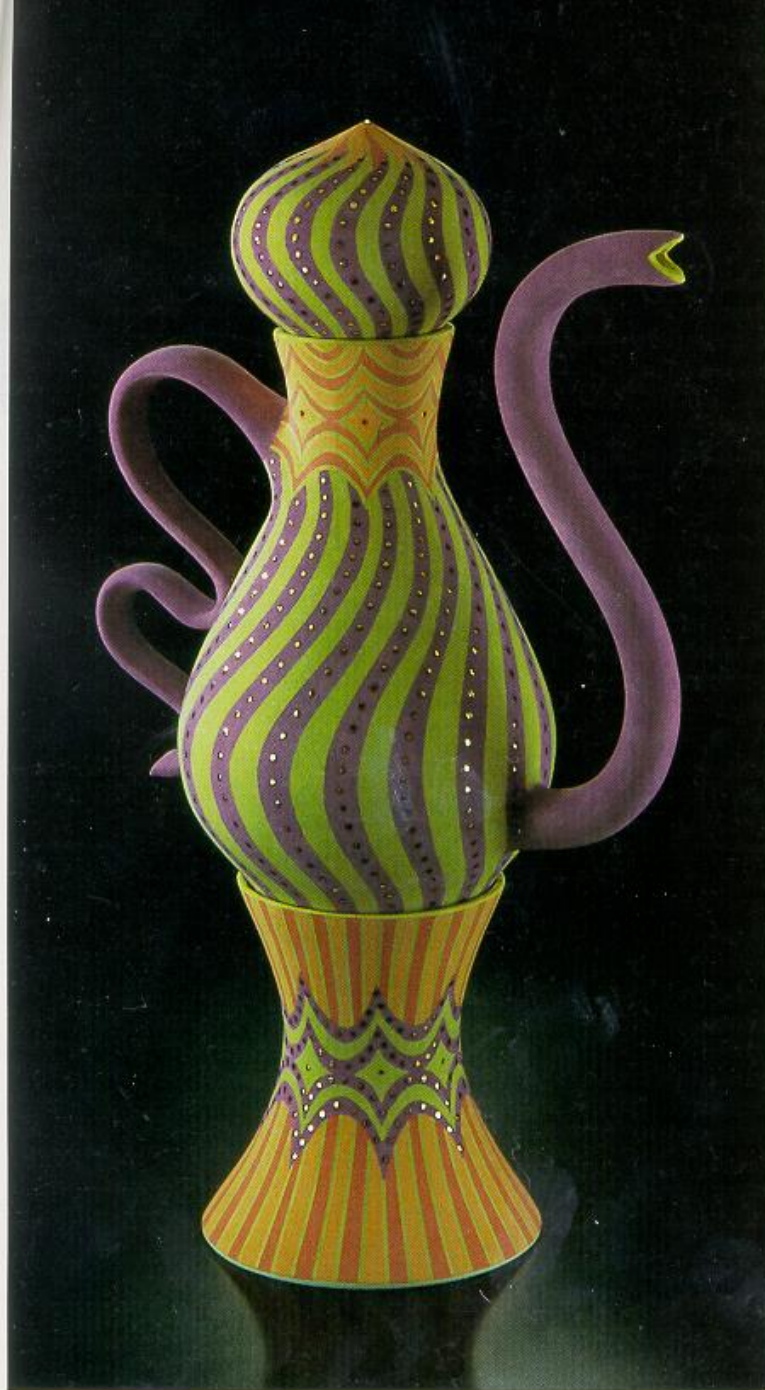


"The Inquisitor's Teapot," 11 inches in height, handbuilt earthenware body and press-molded spout, fired to Cone 04 in oxidation, with copper lid and handle, and rubber tubing.



"The Novice's Teapot," 10 inches in height, handbuilt earthenware with press-molded spout, oxidation fired to Cone 04, with copper lid and wire handle, by John Goodheart, Bloomington, Indiana.

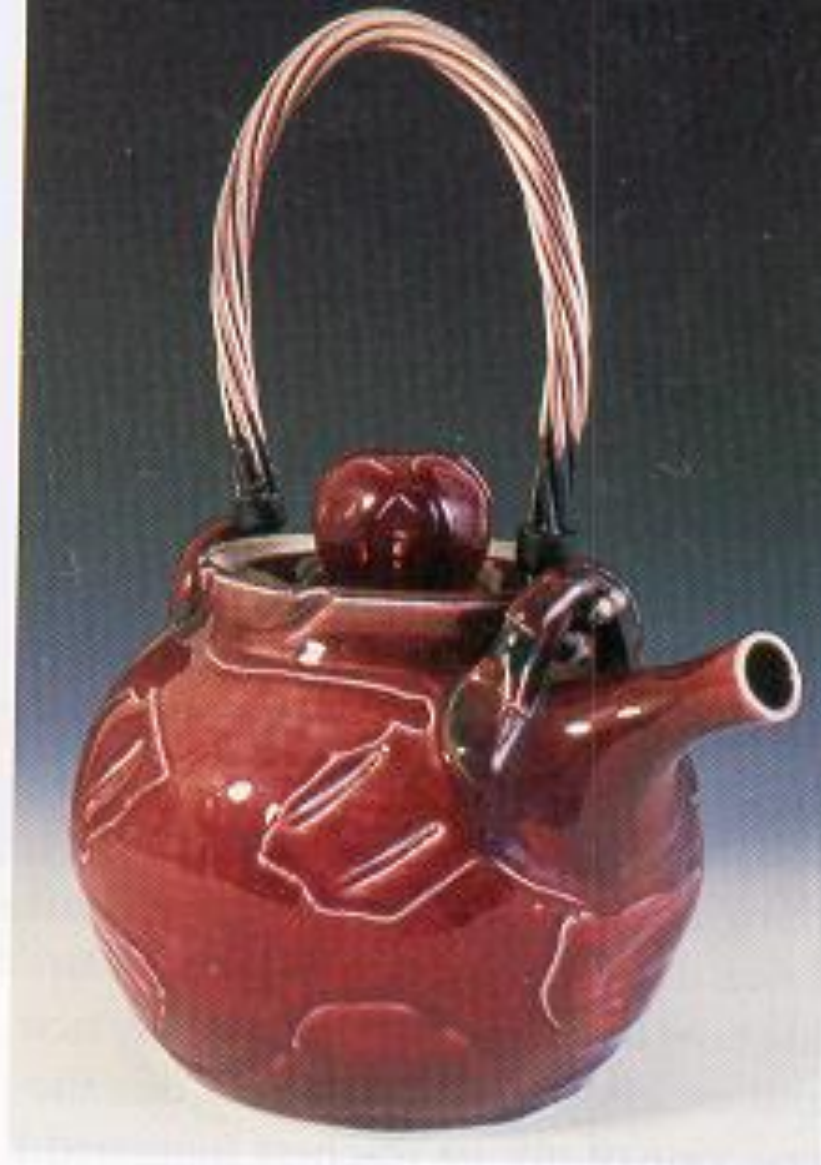




"Purple Knight," 18 inches in height, wheel-thrown and handbuilt earthenware, with tape-resisted glaze patterns, multifired, \$475.







Copper-red-glazed teapot with seven-strand copper handle, 11½ inches in height, wheel thrown and etched, \$200.



Noi Volkov's "Warhol," 11½ inches (44 centimeters) in height, \$2200; at del Mano Gallery, Los Angeles.





"Outlaw Biker Tea Set," 10½ inches (27 centimeters) in height, \$520, by Ron Koehn, Colorado Springs, Colorado.





PHOTOS BY TIM TOSI-LEWIS

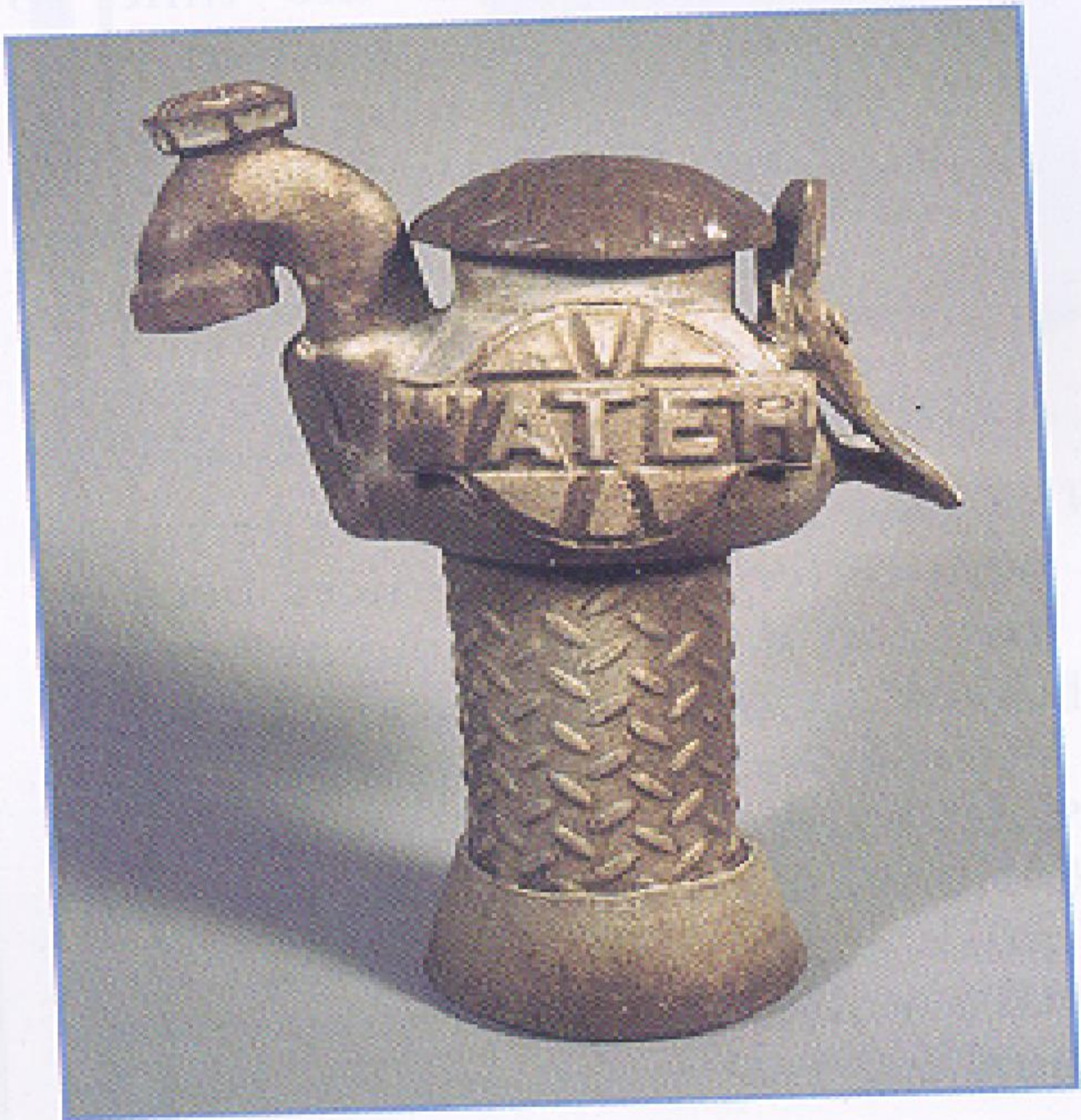
"My Little Dog," 26 inches (66 centimeters) in height, \$1500, by Jim Budde, Boise, Idaho.





"Two Teapots," 12 inches (30 centimeters) in height, handbuilt porcelain, with oxides and glazes.









"Red Sea Tea," 12¼ inches in height, glazed earthenware,  
by Bacia Edelman, Madison, Wisconsin.

# Teapot

- Construct a teapot and 1 cup using the building technique(s) of your choice
  - Wheel thrown
  - Soft or hard slab
  - Sculptural
- The teapot and cup should be a set
- Decorative techniques:
  - Additive/subtractive
  - Underglaze, glaze, sgraffito
- Maximum size:
  - no more than 6” tall and 5” wide







- The pattern for the spout resembles a whale tail (as shown at left). This shape creates a spout that has a bulb at the bottom and a soft outward curve. The spout is cut from a fresh, soft slab, thinner than that used for the main cylinder. Once the spout is cut out, thin the narrow end of it further using a pony roller, so that the slab is thicker where it will attach to the body of the pot and thinner where the liquid will pour out.
- Thin and smooth the edges, score and slip them, then gently curve the spout into a